

# National Gambling Statistics

0011

National Gambling Board  
2005/2006 Financial Year



## IMPORTANT

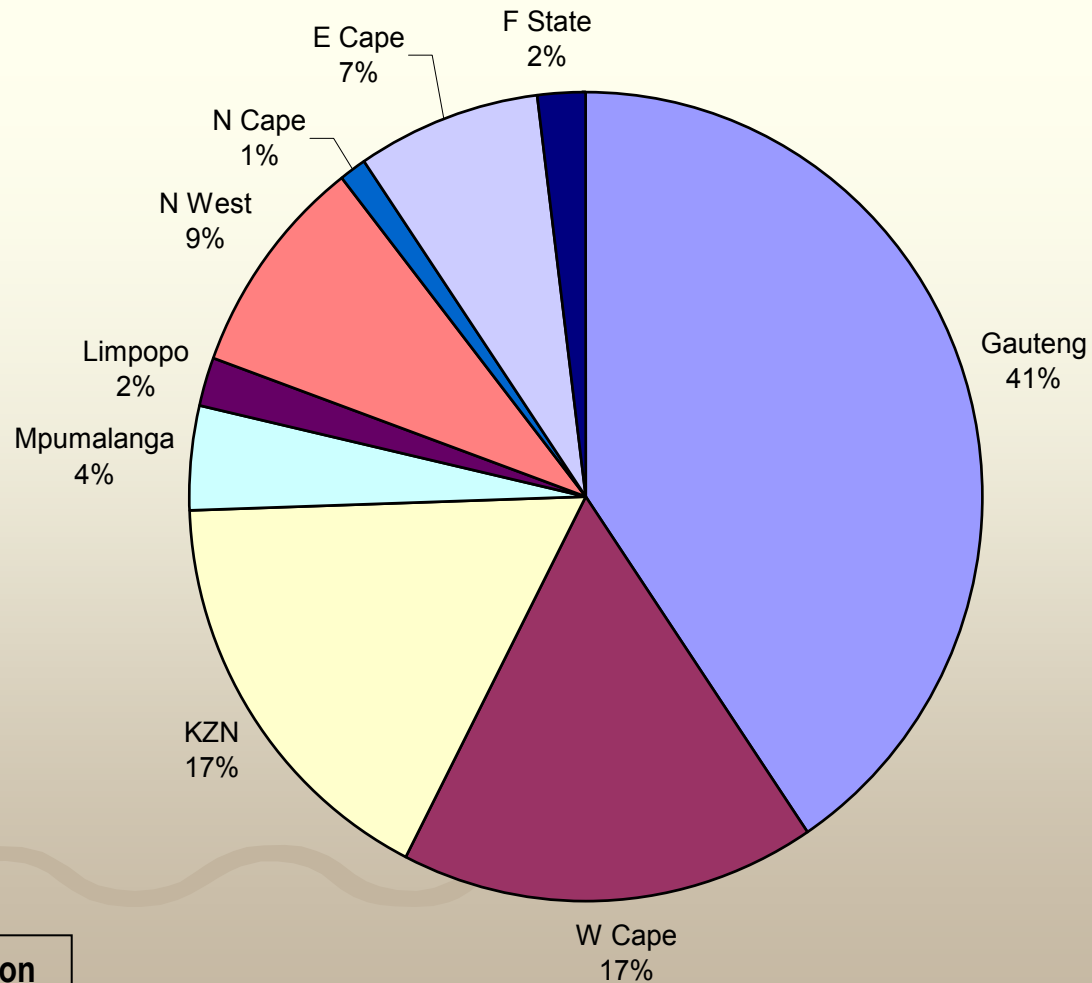
These figures are based on unaudited data received from provincial licensing authorities (PLAs)

# Notes

- **TO** = Turnover (the rand value of money wagered including money wagered from winnings)
- **GGR** = Gross Gambling Revenue (the rand value of the gross win of an operator i.e. turnover less winnings paid to players)
- **Tax** = Gambling tax (gambling tax levied by provinces and collected by PLAs)
- **RTP** = Return to player/punter
- **F2006** = 2005/2006 financial year
- **Q1** = 01 April – 30 June 2005
- **Q2** = 01 July - 30 September 2005
- **Q3** = 01 October – 31 December 2005
- **Q4** = 01 January – 31 March 2006

# GGR per province – F2006

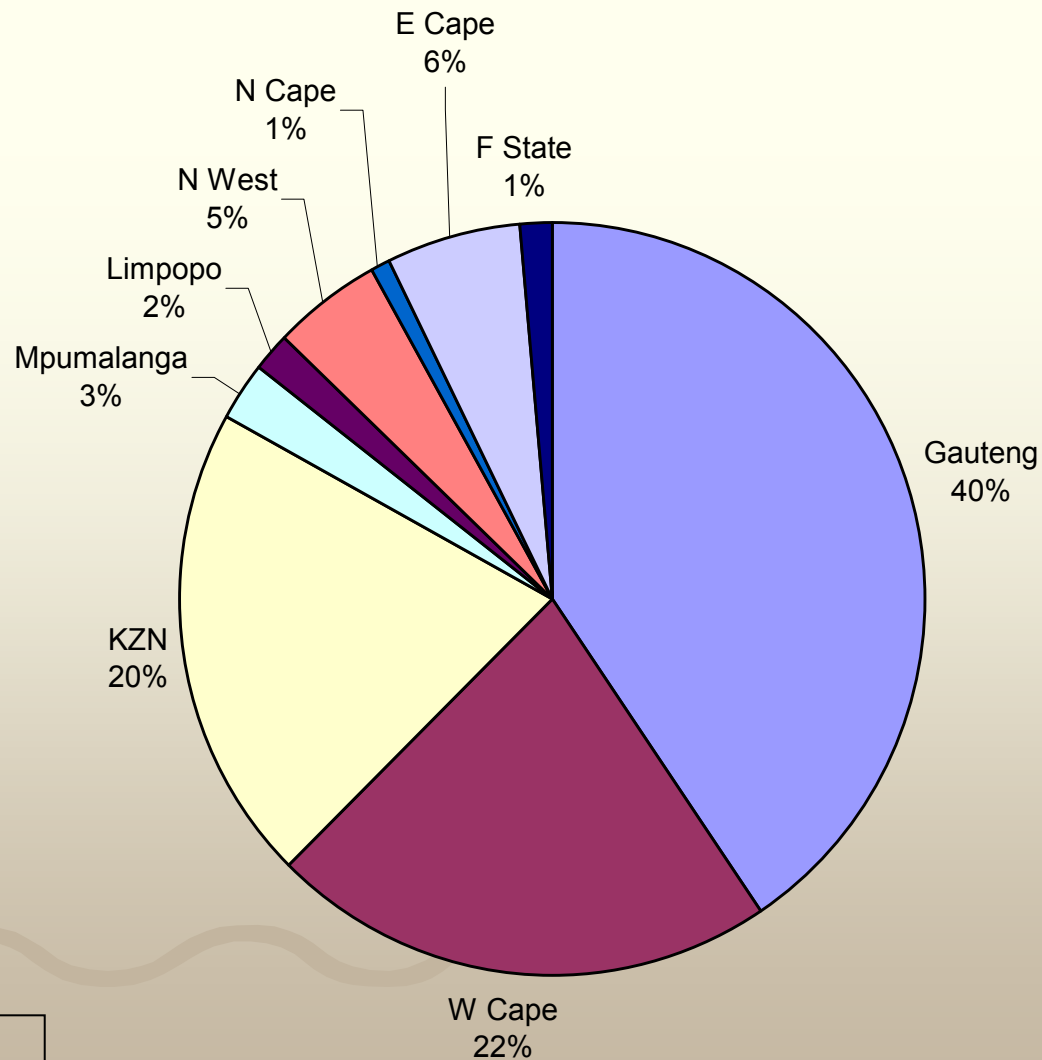
Legend: Gauteng (blue), W Cape (maroon), KZN (yellow), Mpumalanga (cyan), Limpopo (purple), N West (red), N Cape (dark blue), E Cape (light blue), F State (dark blue)



Total R 1 1,510 billion

# Tax contribution per province – F2006

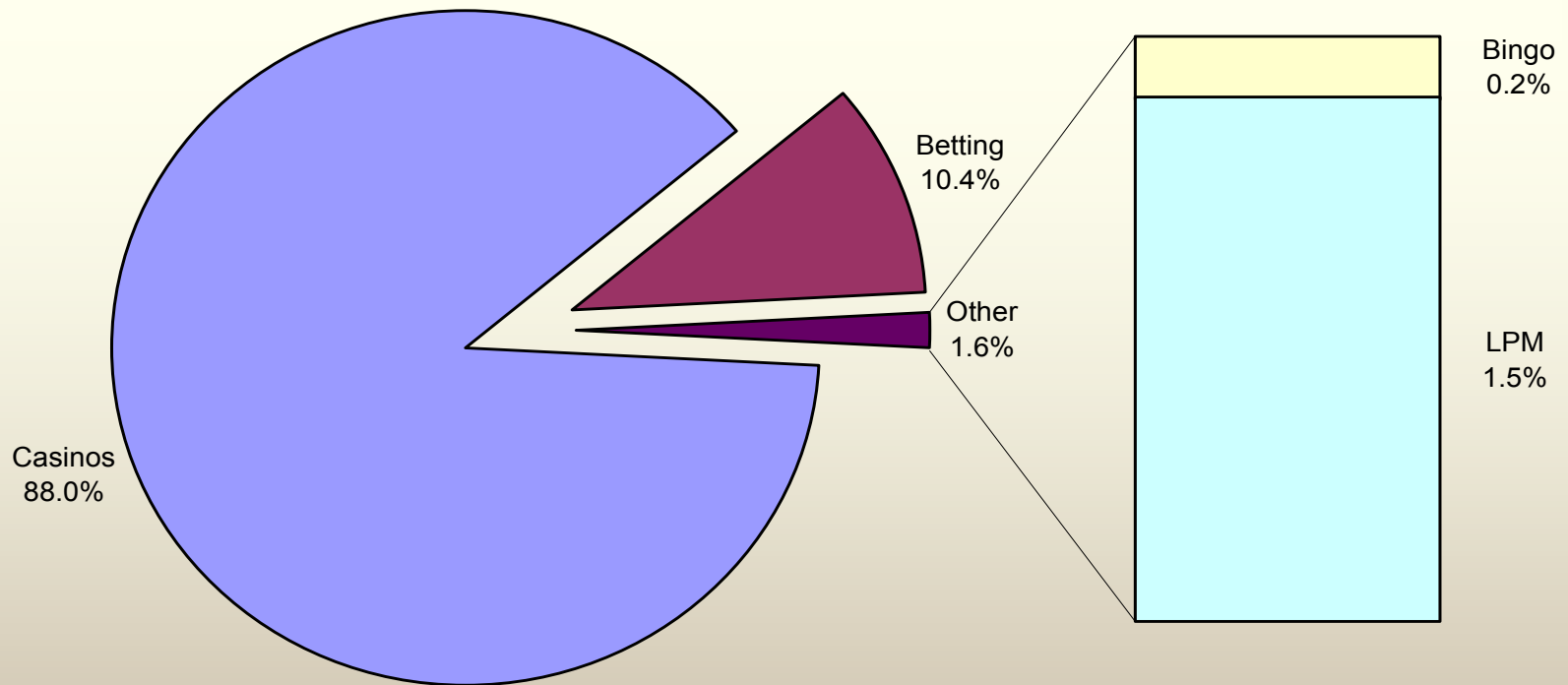
Legend: Gauteng (blue), W Cape (maroon), KZN (yellow), Mpumalanga (cyan), Limpopo (purple), N West (red), N Cape (dark blue), E Cape (light blue), F State (dark blue)



Total R 1, 07 billion

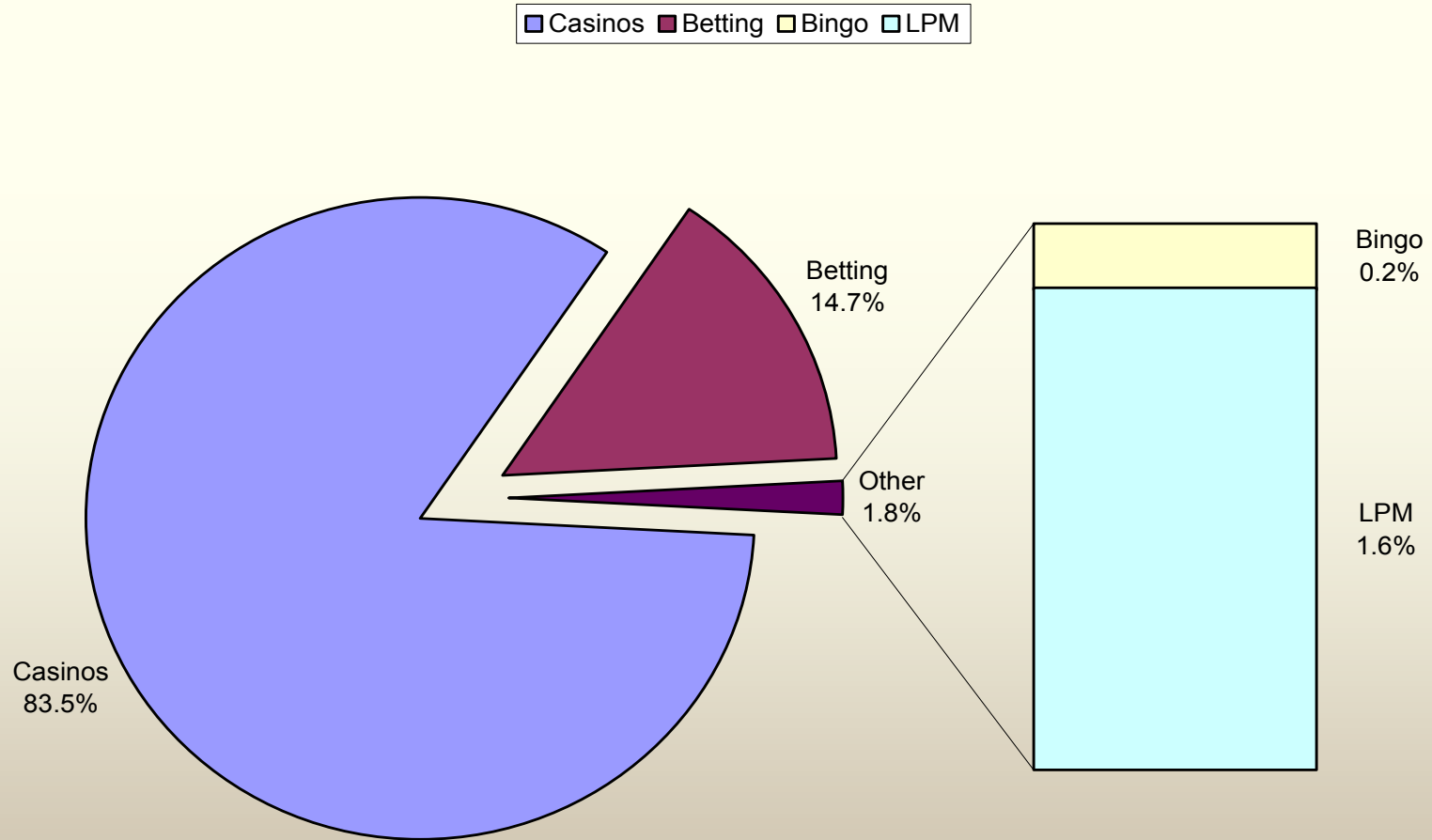
# GGR per gambling mode – F2006

■ Casinos ■ Betting ■ Bingo ■ LPM



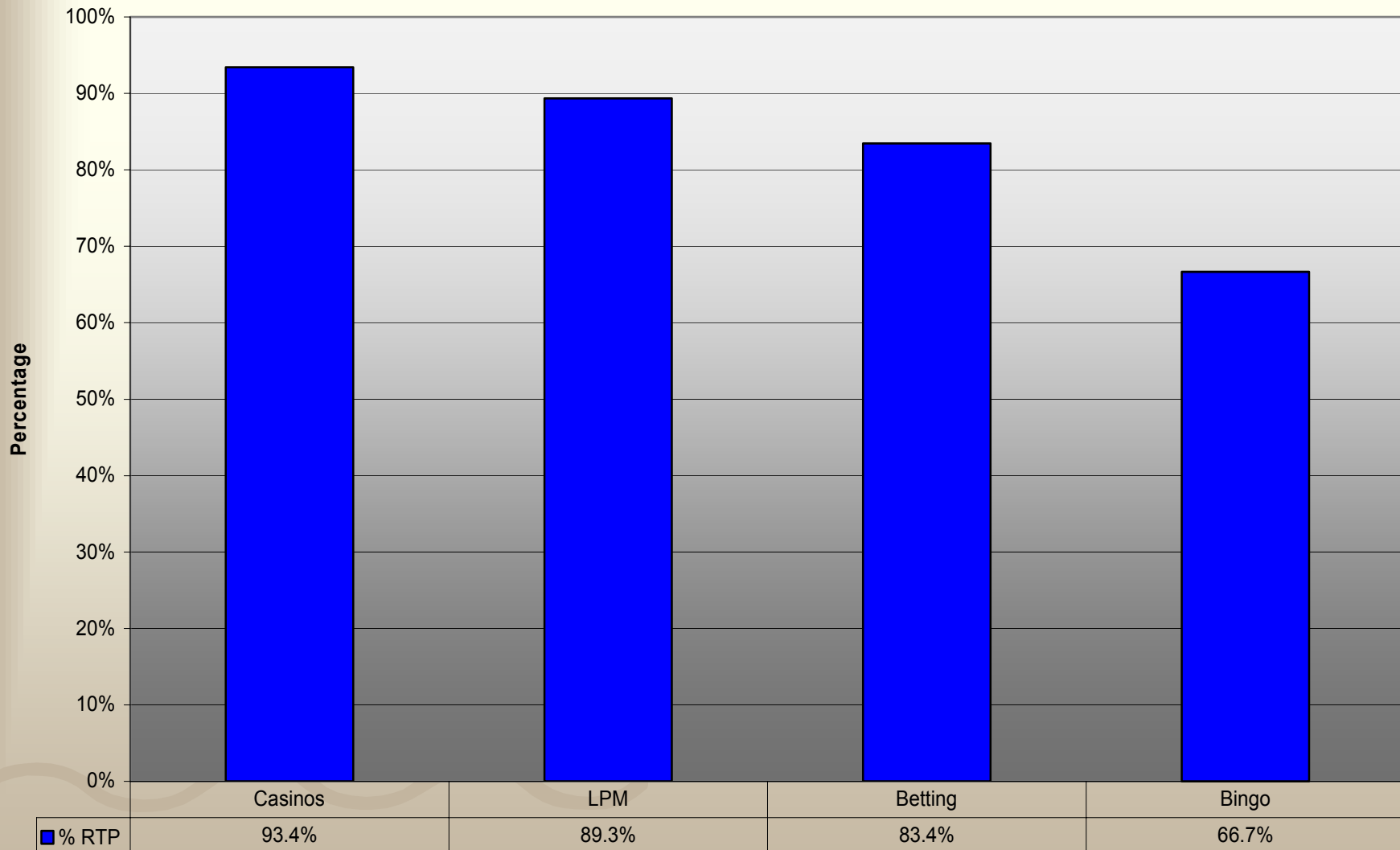
Total R 1 1,510 billion

# Tax per gambling mode – F2006



Total R 1, 07 billion

# Percentage of RTP per gambling mode – F2006

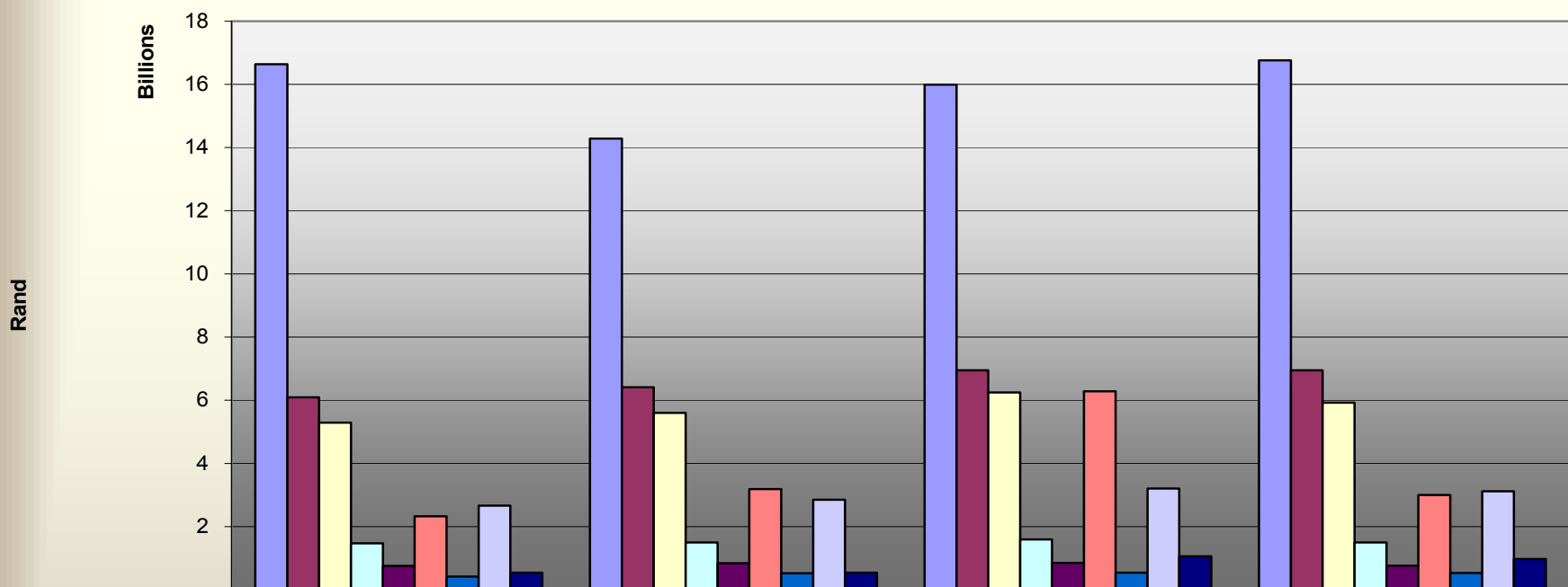


**Total 92.9%**



# Quarterly casino turnover – F2006

■ Gauteng 
 ■ W Cape 
 ■ KZN 
 ■ Mpumalanga 
 ■ Limpopo 
 ■ N West 
 ■ N Cape 
 ■ E Cape 
 ■ F State

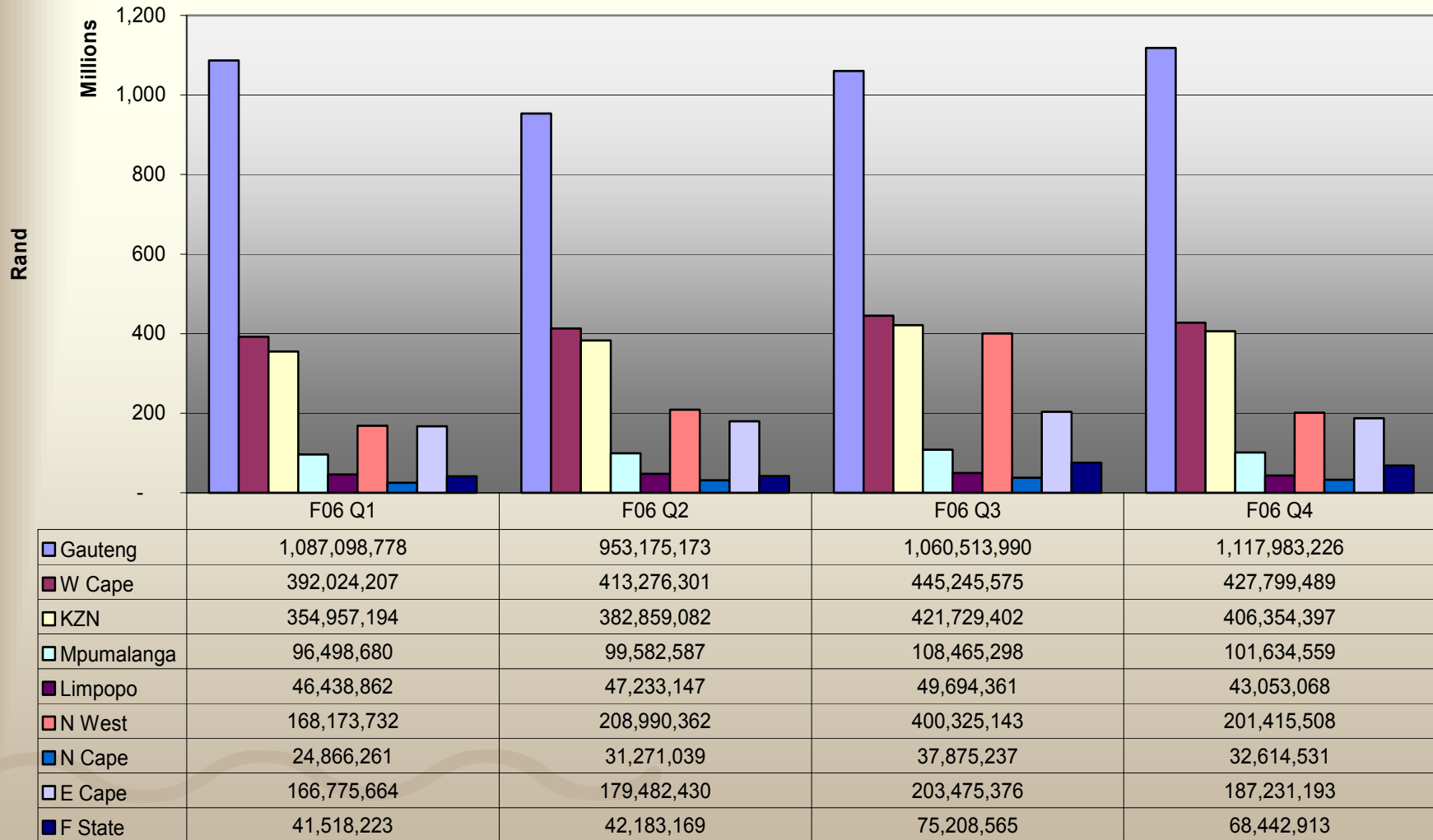


	F06 Q1	F06 Q2	F06 Q3	F06 Q4
■ Gauteng	16,641,117,405	14,283,555,241	15,991,286,187	16,755,813,083
■ W Cape	6,092,596,227	6,413,639,461	6,946,617,488	6,948,313,878
■ KZN	5,295,363,250	5,602,335,097	6,248,379,558	5,919,440,919
■ Mpumalanga	1,477,335,156	1,499,853,433	1,591,454,310	1,499,752,891
■ Limpopo	760,362,594	843,033,770	853,822,241	769,180,606
■ N West	2,326,865,018	3,191,571,565	6,288,741,854	2,998,987,334
■ N Cape	419,240,039	528,334,539	543,869,205	530,494,909
■ E Cape	2,664,951,398	2,851,946,257	3,210,294,891	3,124,790,774
■ F State	544,933,987	546,236,423	1,061,222,073	978,205,840

Fiscal Quarter

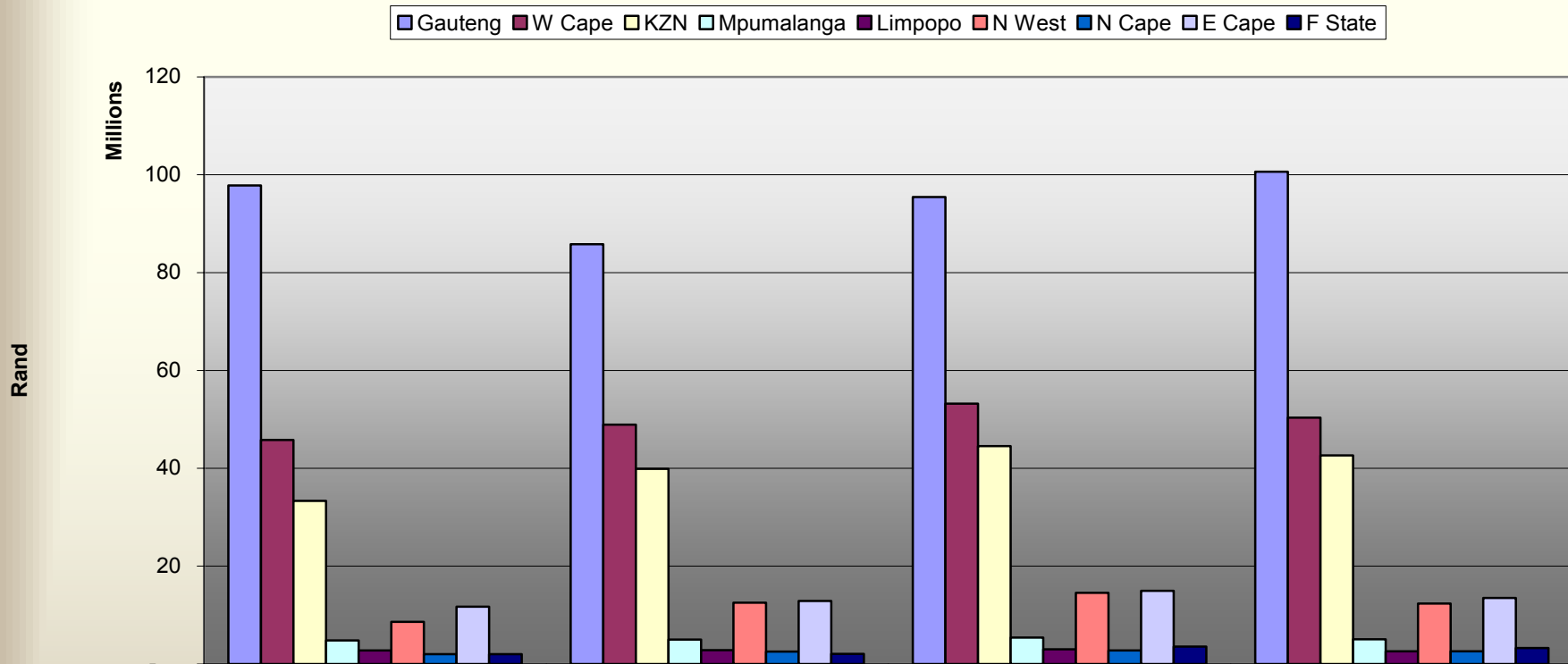
# Quarterly casino GGR – F2006

Legend: Gauteng (blue), W Cape (maroon), KZN (yellow), Mpumalanga (cyan), Limpopo (purple), N West (red), N Cape (dark blue), E Cape (light blue), F State (dark blue)



Fiscal Quarter

# Quarterly casino tax – F2006

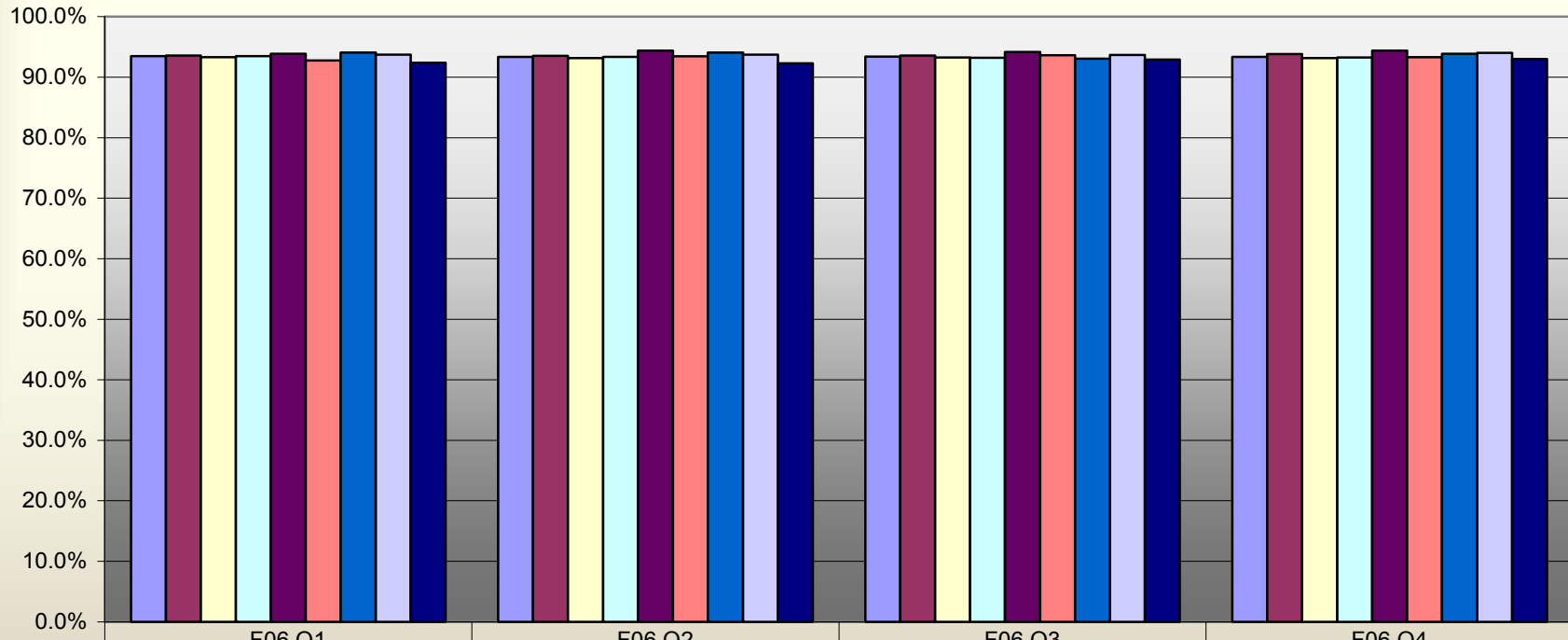


	F06 Q1	F06 Q2	F06 Q3	F06 Q4
Gauteng	97,838,890	85,785,766	95,446,259	100,618,490
W Cape	45,812,431	48,924,183	53,229,155	50,367,505
KZN	33,324,143	39,906,574	44,533,513	42,627,632
Mpumalanga	4,824,934	4,979,129	5,423,265	5,081,728
Limpopo	2,786,331	2,833,989	2,981,662	2,583,184
N West	8,625,568	12,545,786	14,518,393	12,345,939
N Cape	1,989,301	2,501,683	2,740,795	2,606,414
E Cape	11,735,614	12,861,768	14,959,757	13,511,066
F State	2,011,749	2,047,432	3,578,899	3,253,804

Fiscal Quarter

# Quarterly casino RTP % – F2006

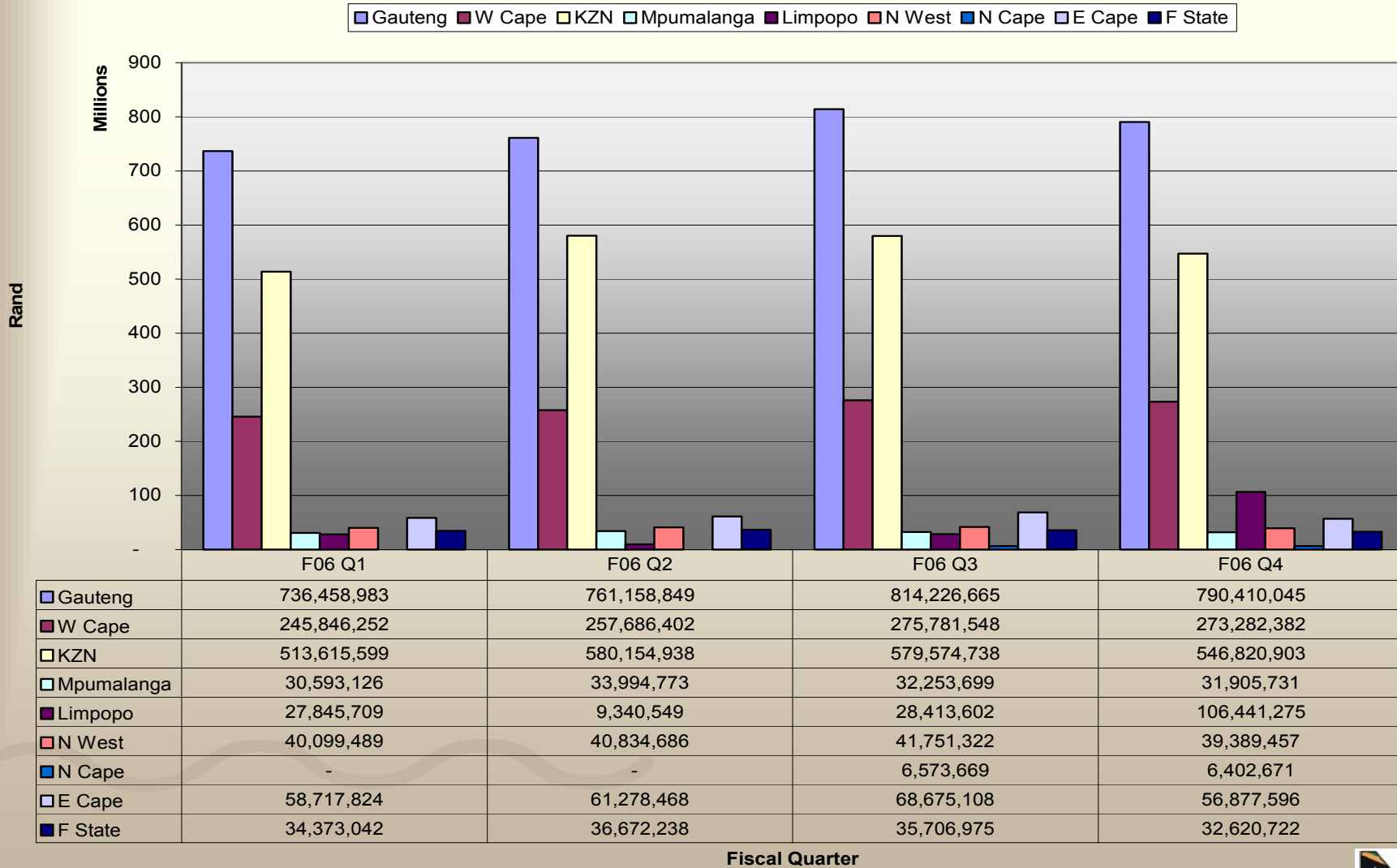
■ Gauteng 
 ■ W Cape 
 ■ KZN 
 ■ Mpumalanga 
 ■ Limpopo 
 ■ N West 
 ■ N Cape 
 ■ E Cape 
 ■ F State



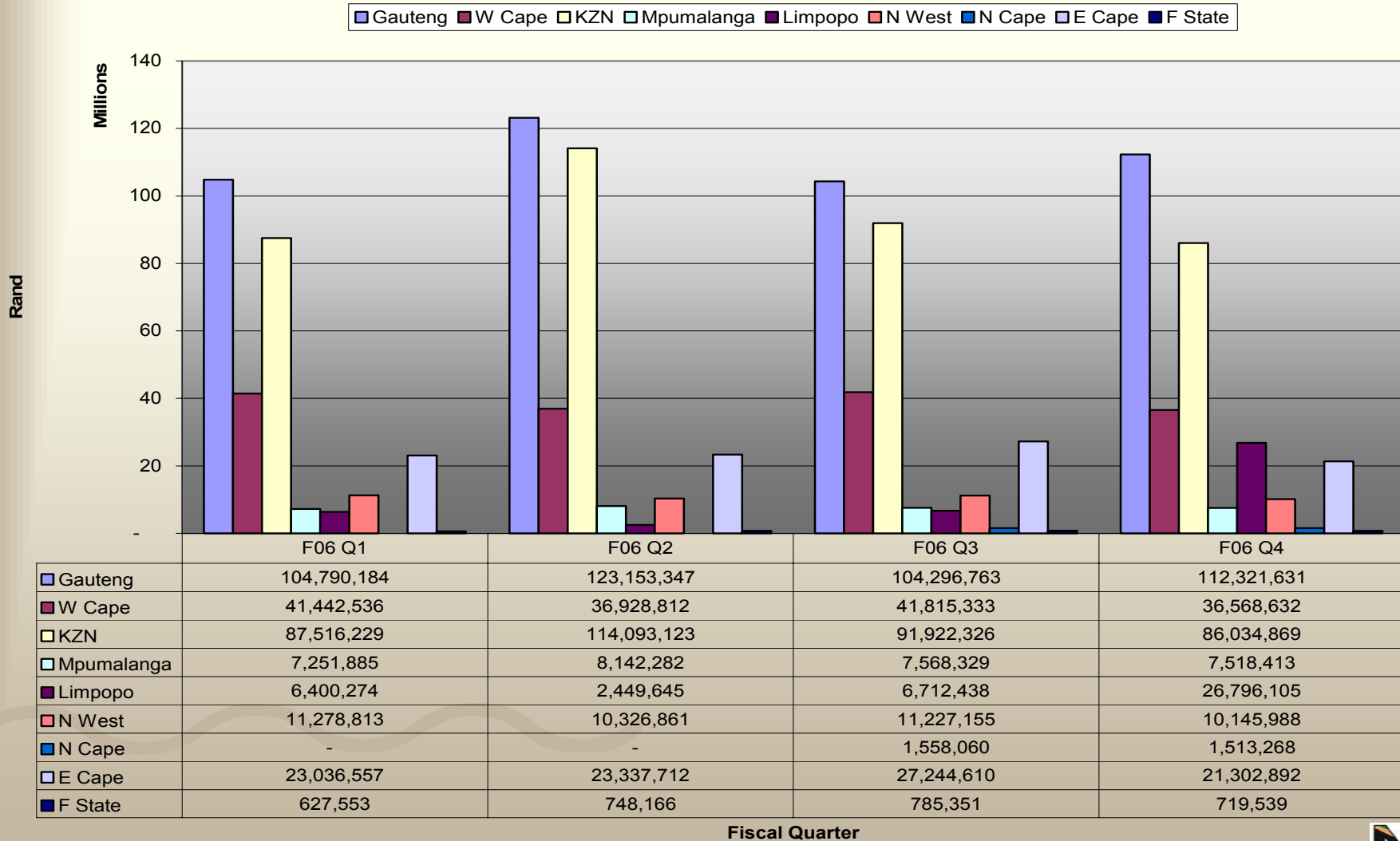
	F06 Q1	F06 Q2	F06 Q3	F06 Q4
<span style="color: blue;">■</span> Gauteng	93.5%	93.3%	93.4%	93.3%
<span style="color: maroon;">■</span> W Cape	93.6%	93.6%	93.6%	93.8%
<span style="color: yellow;">■</span> KZN	93.3%	93.2%	93.3%	93.1%
<span style="color: cyan;">■</span> Mpumalanga	93.5%	93.4%	93.2%	93.2%
<span style="color: purple;">■</span> Limpopo	93.9%	94.4%	94.2%	94.4%
<span style="color: red;">■</span> N West	92.8%	93.5%	93.6%	93.3%
<span style="color: blue;">■</span> N Cape	94.1%	94.1%	93.0%	93.9%
<span style="color: lightblue;">■</span> E Cape	93.7%	93.7%	93.7%	94.0%
<span style="color: darkblue;">■</span> F State	92.4%	92.3%	92.9%	93.0%

Fiscal Quarter

# Quarterly betting turnover [Bookmakers & Totalisators] – F2006

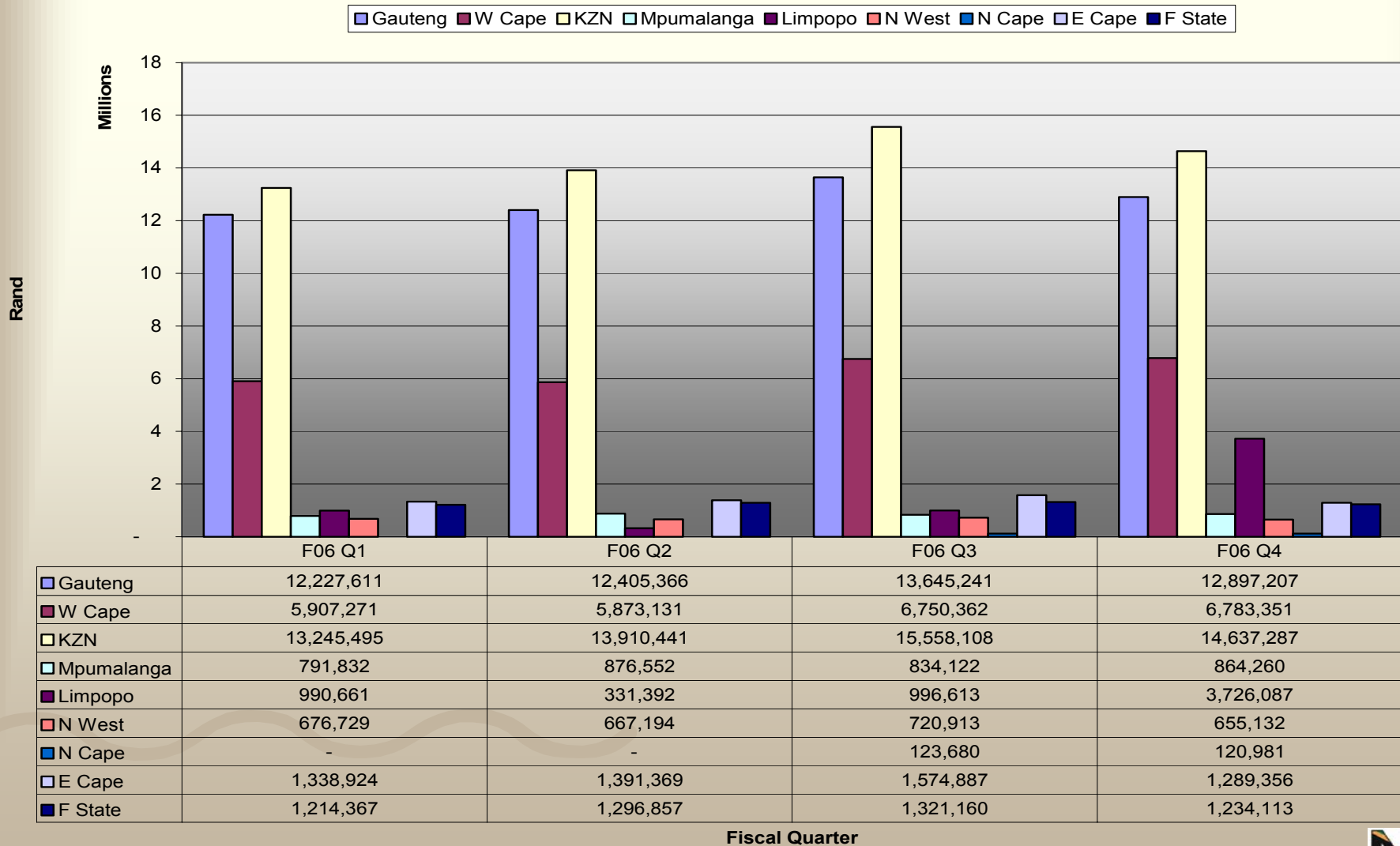


# Quarterly betting GGR [Bookmakers & Totalisators] – F2006



Fiscal Quarter

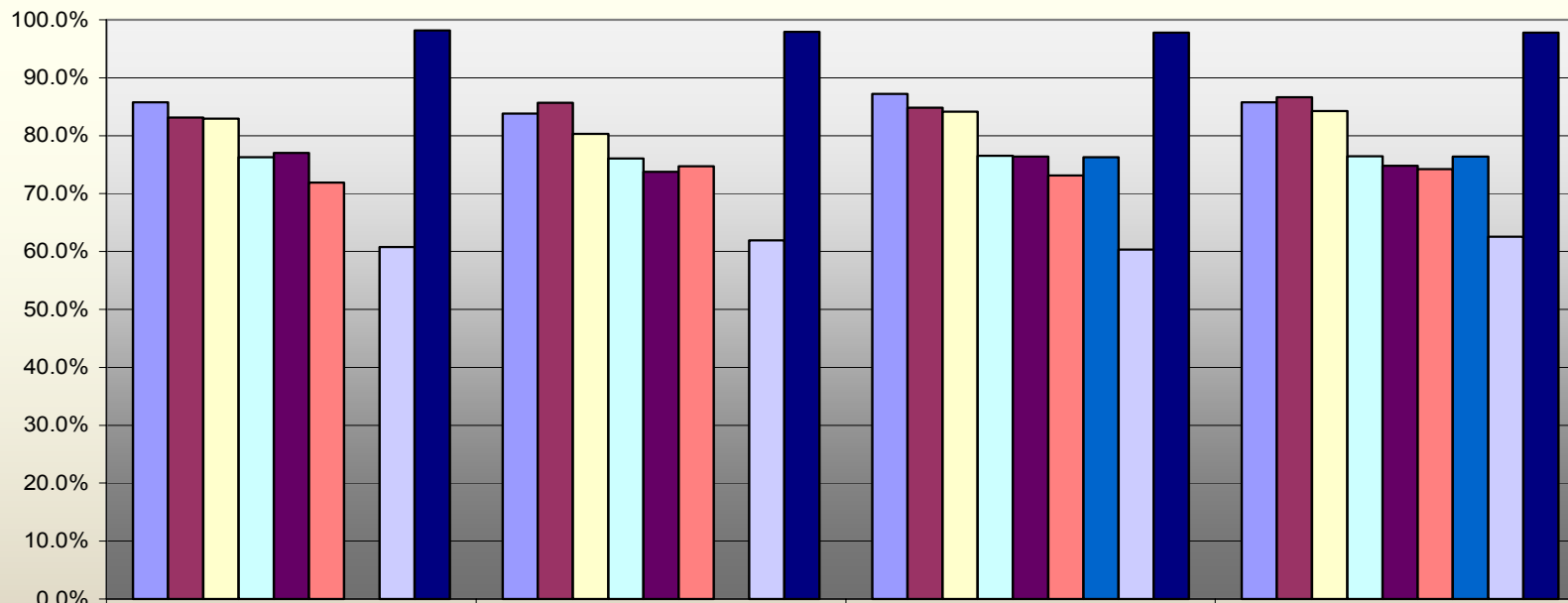
# Quarterly betting tax [Bookmakers & Totalisators] – F2006



Fiscal Quarter

# Quarterly betting RTP % [Bookmakers & Totalisators] – F2006

Legend: Gauteng (light blue), W Cape (maroon), KZN (yellow), Mpumalanga (cyan), Limpopo (purple), N West (red), N Cape (blue), E Cape (light blue), F State (dark blue)



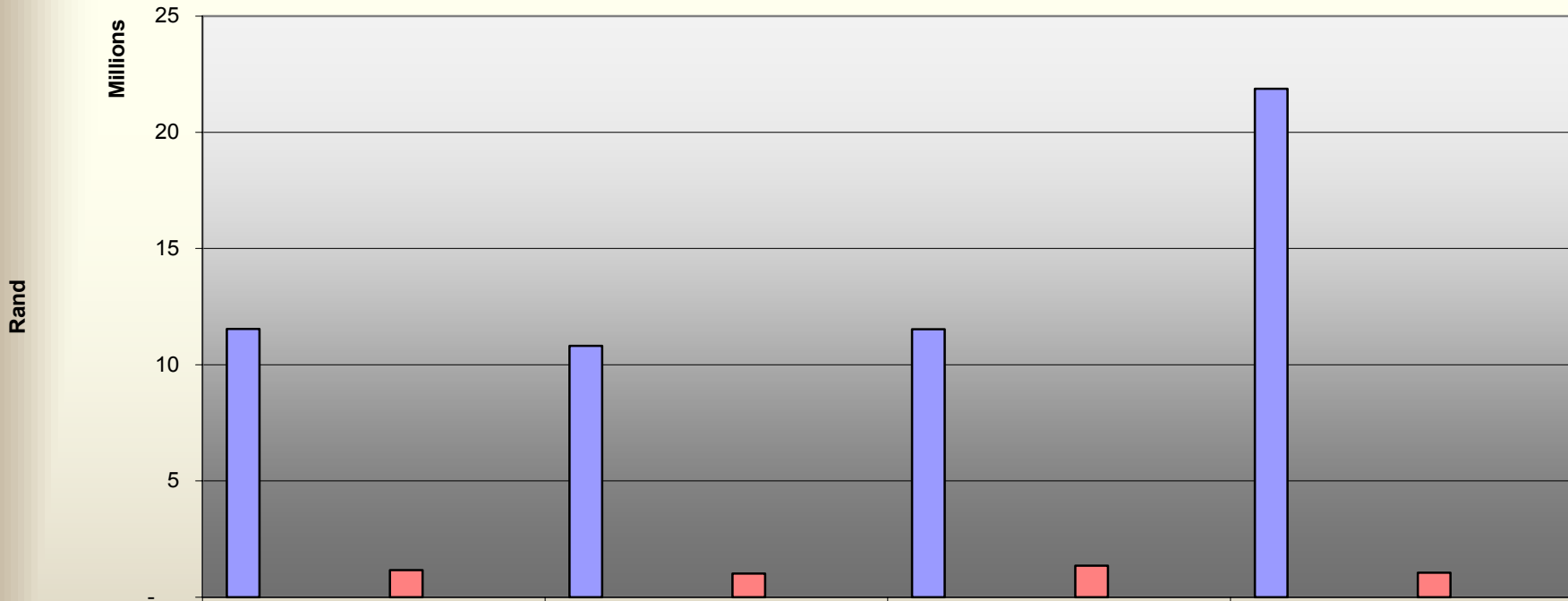
	F06 Q1	F06 Q2	F06 Q3	F06 Q4
Gauteng	85.8%	83.8%	87.2%	85.8%
W Cape	83.1%	85.7%	84.8%	86.6%
KZN	83.0%	80.3%	84.1%	84.3%
Mpumalanga	76.3%	76.0%	76.5%	76.4%
Limpopo	77.0%	73.8%	76.4%	74.8%
N West	71.9%	74.7%	73.1%	74.2%
N Cape	0.0%	0.0%	76.3%	76.4%
E Cape	60.8%	61.9%	60.3%	62.5%
F State	98.2%	98.0%	97.8%	97.8%

Fiscal Quarter



# Quarterly bingo turnover – F2006

Legend: Gauteng (light blue), W Cape (dark red), KZN (light green), Mpumalanga (light blue), Limpopo (dark purple), N West (light red), N Cape (medium blue), E Cape (light blue), F State (dark blue)

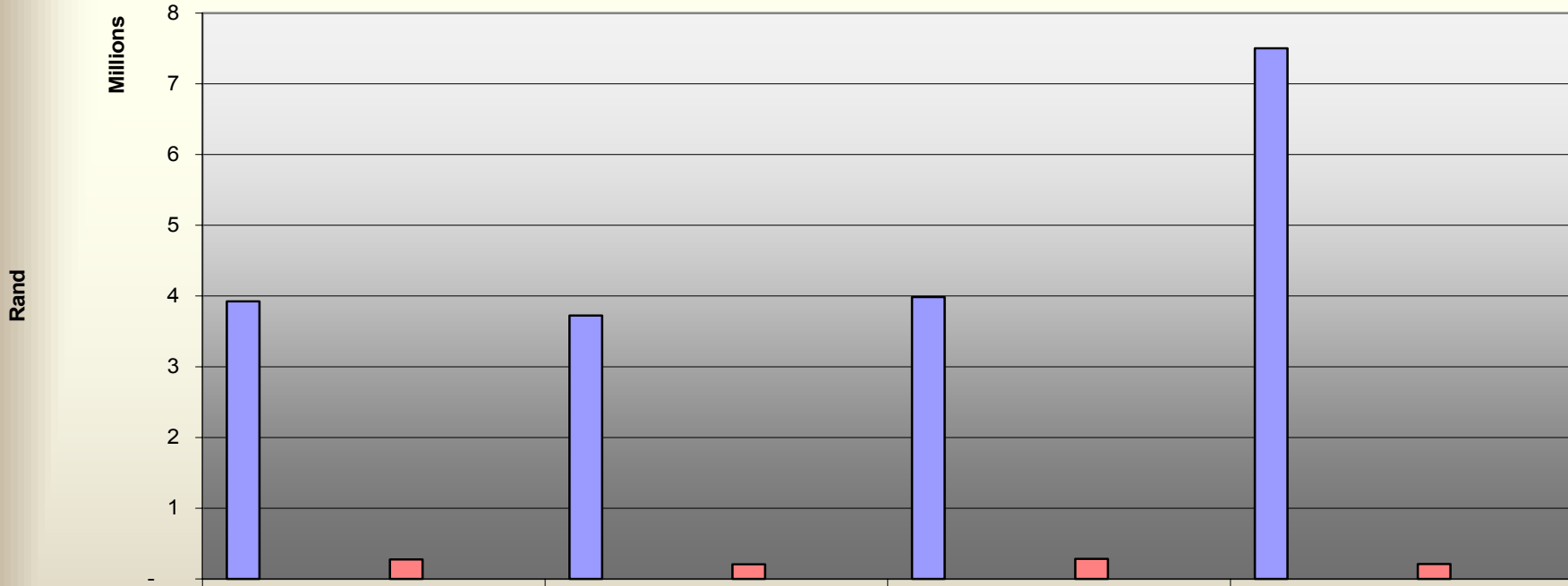


	F06 Q1	F06 Q2	F06 Q3	F06 Q4
Gauteng	11,543,228	10,807,542	11,526,101	21,869,863
W Cape				
KZN				
Mpumalanga				
Limpopo				
N West	1,163,786	1,012,328	1,353,772	1,047,672
N Cape				
E Cape				
F State				

Fiscal Quarter

# Quarterly bingo GGR – F2006

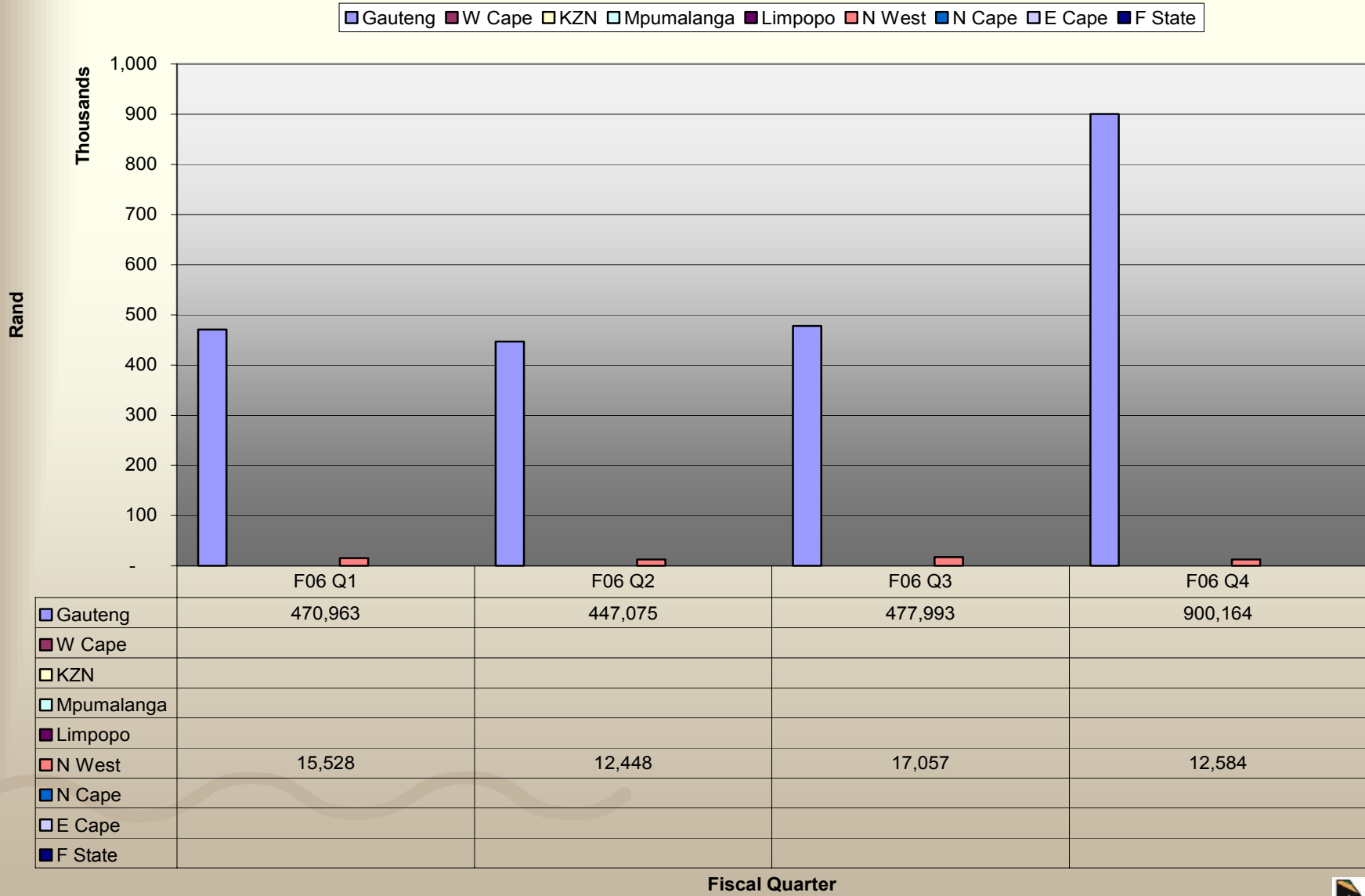
■ Gauteng 
 ■ W Cape 
 ■ KZN 
 ■ Mpumalanga 
 ■ Limpopo 
 ■ N West 
 ■ N Cape 
 ■ E Cape 
 ■ F State



	F06 Q1	F06 Q2	F06 Q3	F06 Q4
<span style="color: blue;">■</span> Gauteng	3,924,694	3,725,623	3,983,276	7,501,363
<span style="color: maroon;">■</span> W Cape				
<span style="color: lightgrey;">■</span> KZN				
<span style="color: lightblue;">■</span> Mpumalanga				
<span style="color: purple;">■</span> Limpopo				
<span style="color: pink;">■</span> N West	274,570	207,473	285,282	209,733
<span style="color: blue;">■</span> N Cape				
<span style="color: lightgrey;">■</span> E Cape				
<span style="color: darkblue;">■</span> F State				

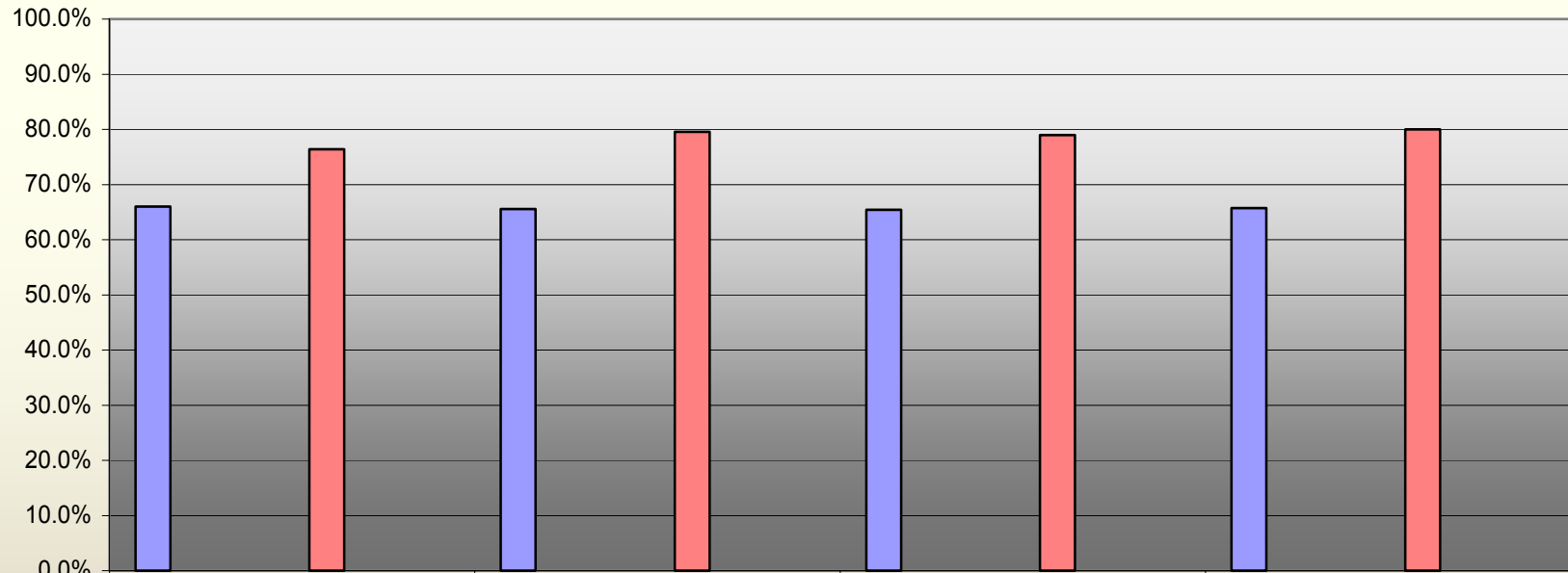
Fiscal Quarter

# Quarterly bingo tax – F2006



# Quarterly bingo RTP % – F2006

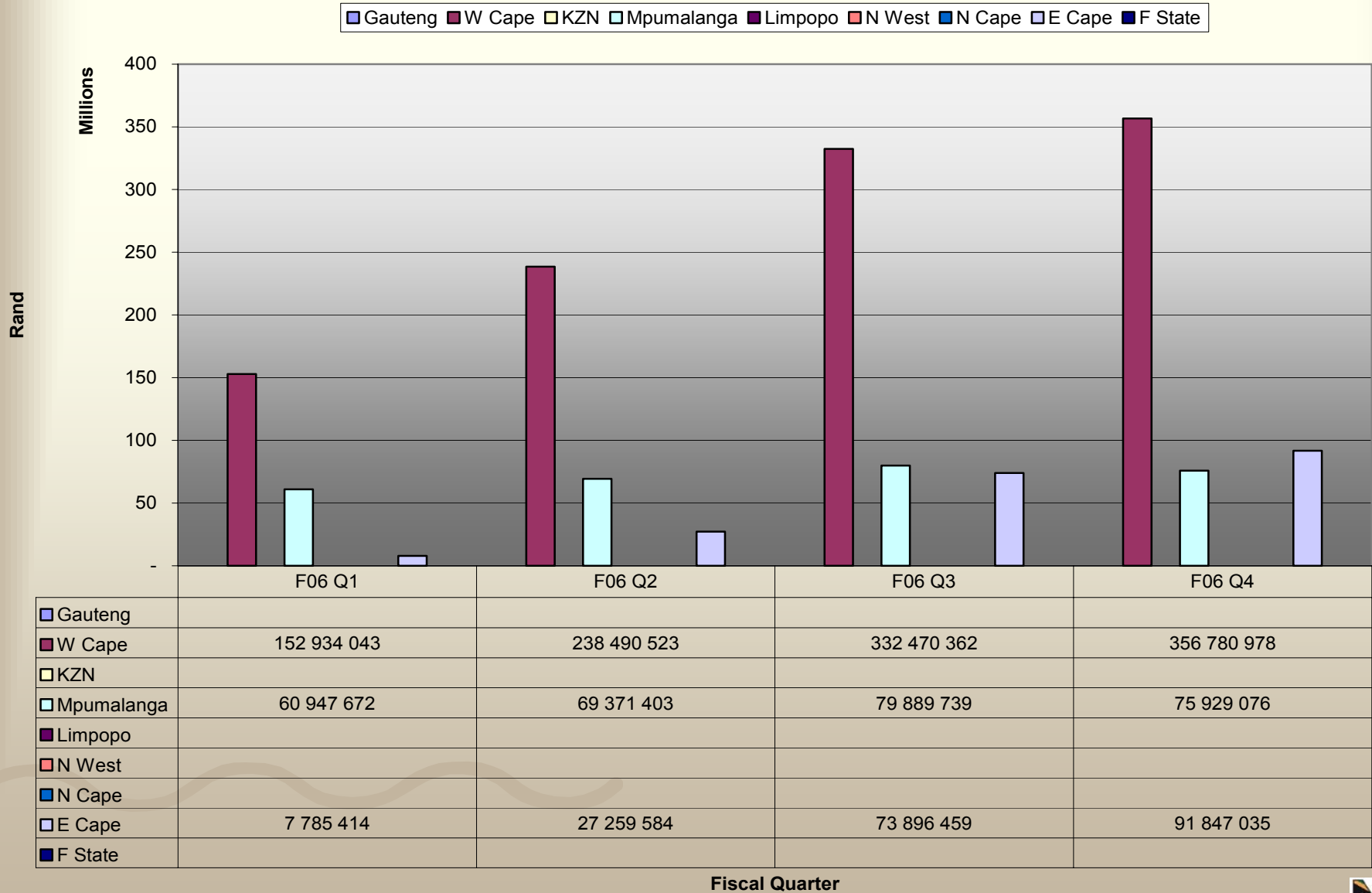
Legend: Gauteng (light blue), W Cape (dark red), KZN (light green), Mpumalanga (light blue), Limpopo (purple), N West (red), N Cape (dark blue), E Cape (light blue), F State (dark blue)



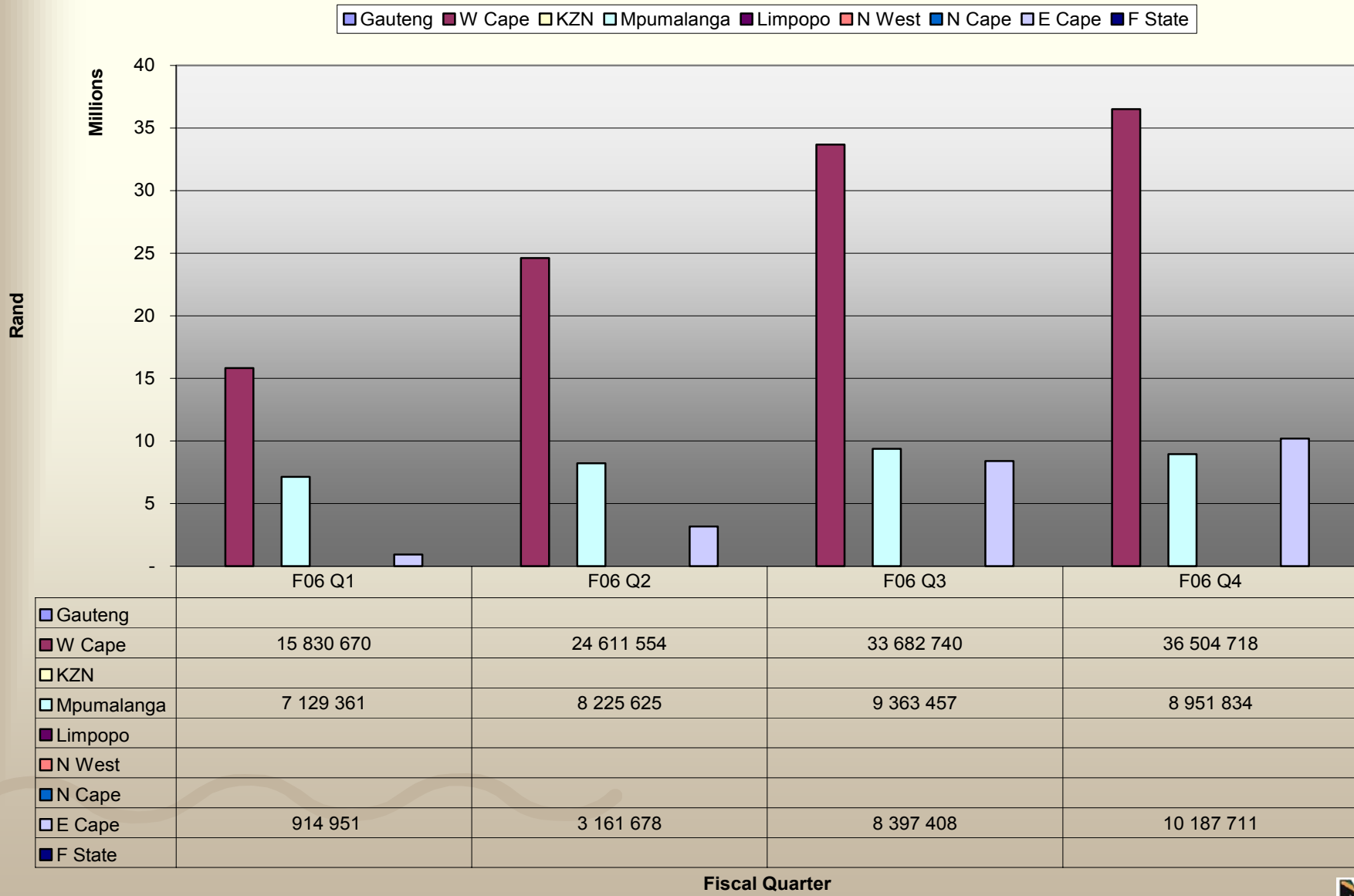
	F06 Q1	F06 Q2	F06 Q3	F06 Q4
Gauteng	66.0%	65.5%	65.4%	65.7%
W Cape				
KZN				
Mpumalanga				
Limpopo				
N West	76.4%	79.5%	78.9%	80.0%
N Cape				
E Cape				
F State				

Fiscal Quarter

# Quarterly LPM turnover – F2006

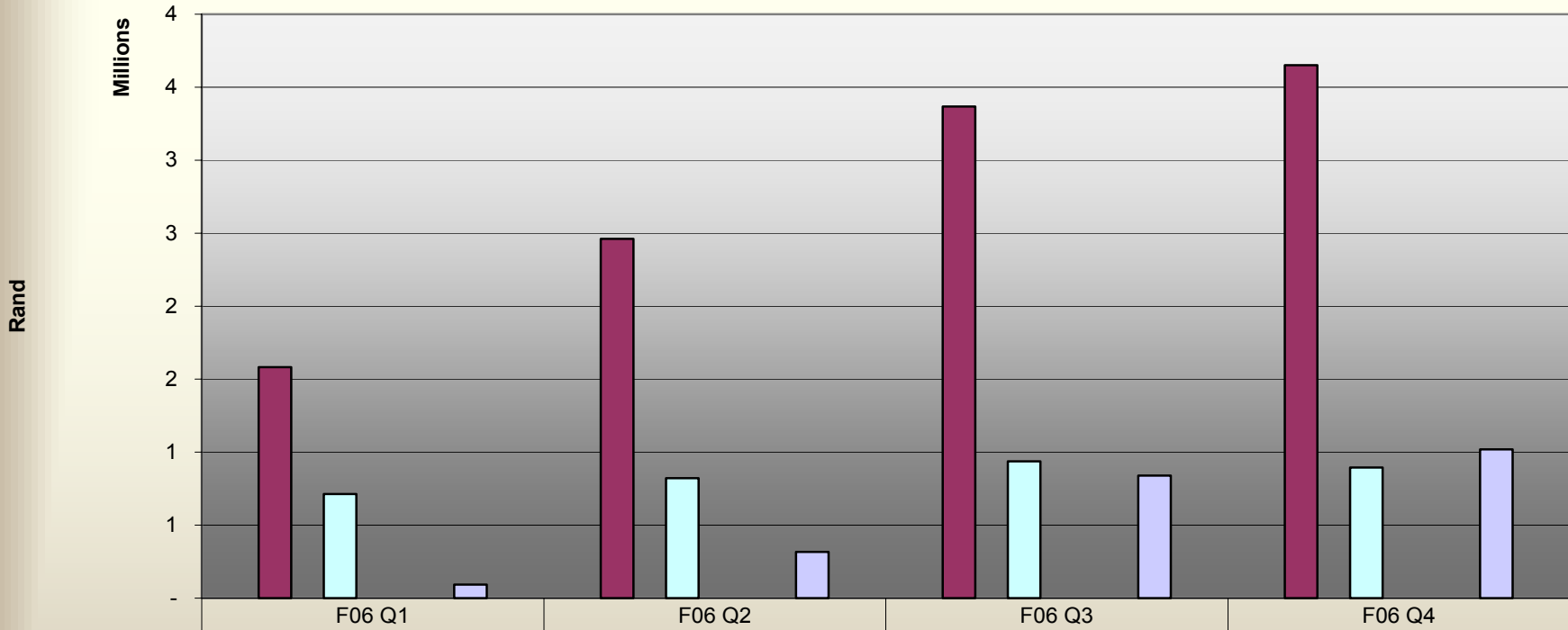


# Quarterly LPM GGR – F2006



# Quarterly LPM tax – F2006

Legend: Gauteng (light blue), W Cape (maroon), KZN (yellow), Mpumalanga (cyan), Limpopo (purple), N West (orange), N Cape (dark blue), E Cape (light purple), F State (dark blue)

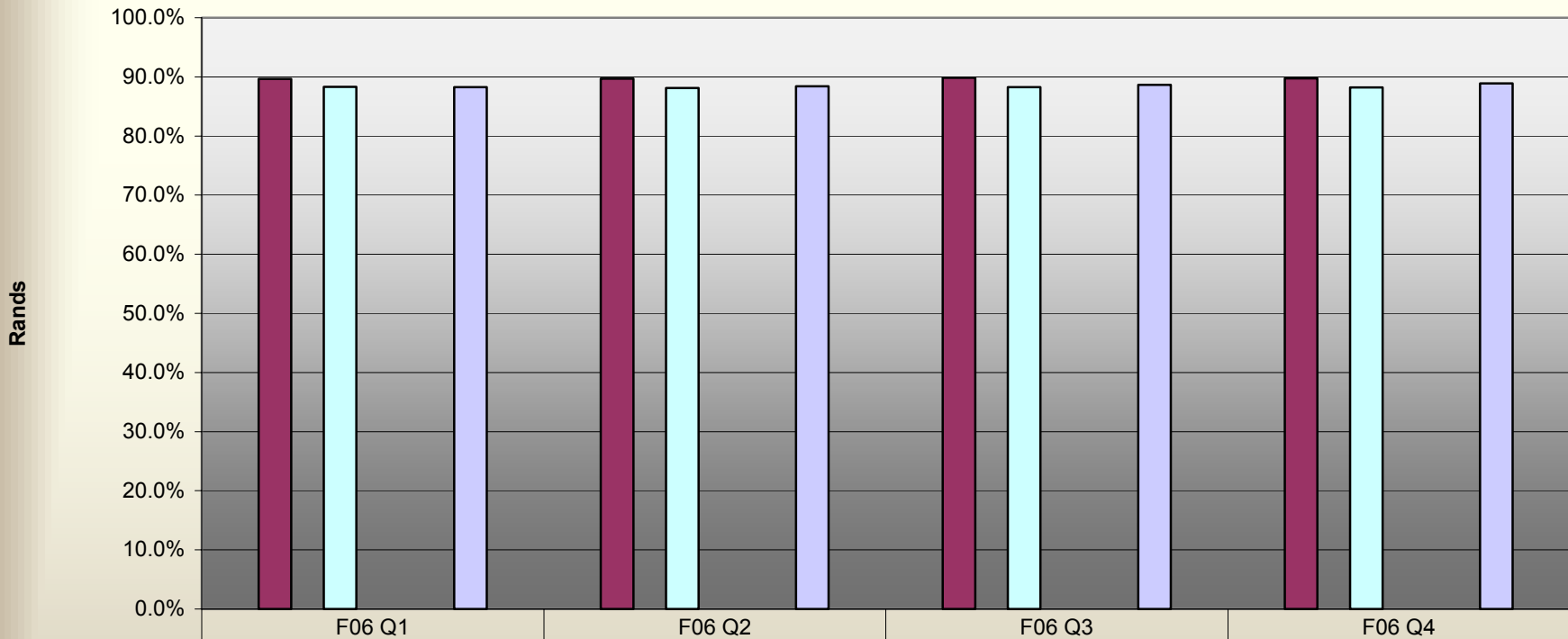


	F06 Q1	F06 Q2	F06 Q3	F06 Q4
Gauteng				
W Cape	1 583 067	2 461 155	3 368 274	3 650 472
KZN				
Mpumalanga	712 936	822 562	936 346	895 183
Limpopo				
N West				
N Cape				
E Cape	91 495	316 168	839 741	1 018 771
F State				

Fiscal Quarter

# Quarterly LPM RTP% – F2006

Legend: Gauteng (light blue), W Cape (maroon), KZN (yellow), Mpumalanga (light green), Limpopo (purple), N West (pink), N Cape (dark blue), E Cape (light purple), F State (dark blue)



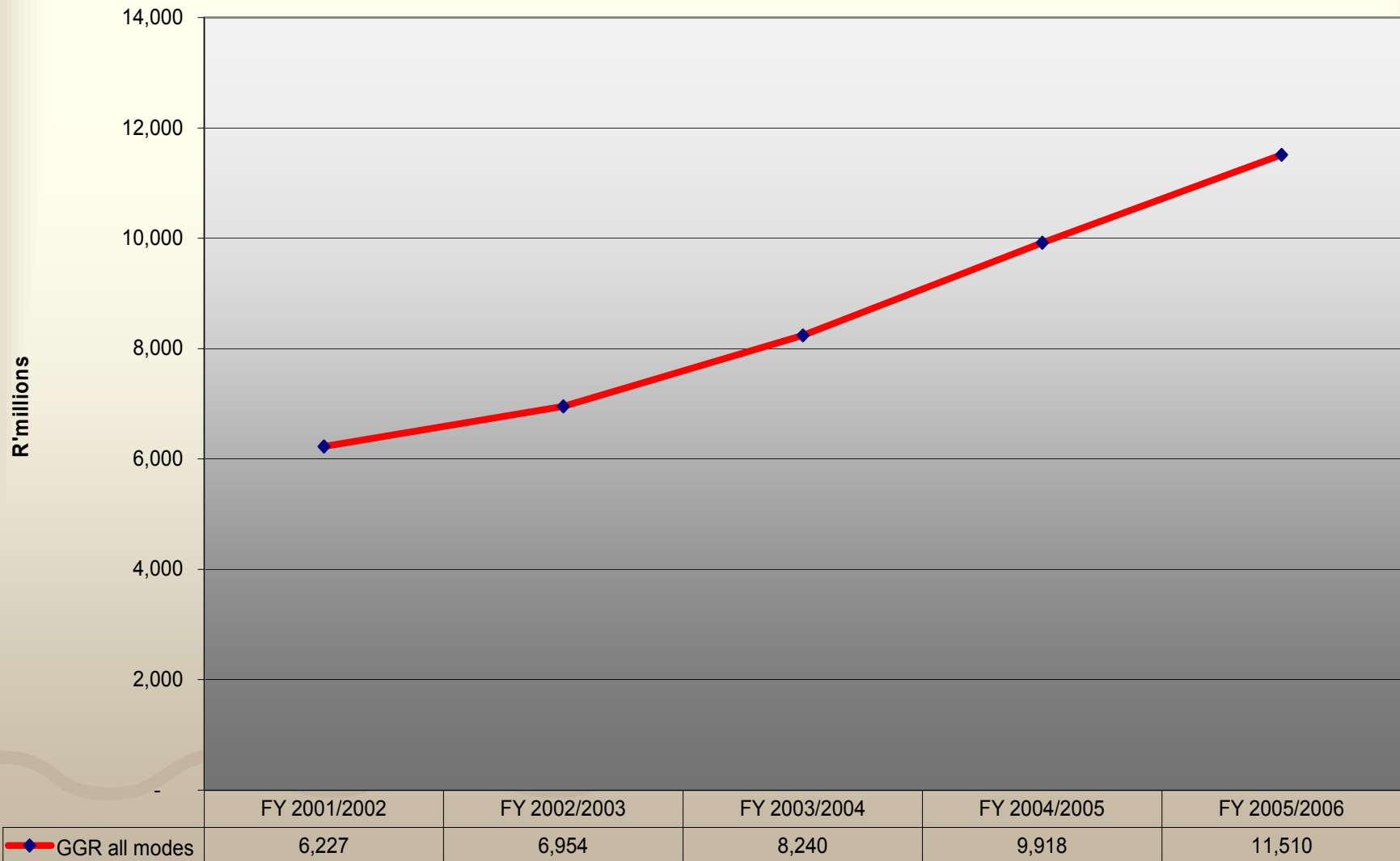
	F06 Q1	F06 Q2	F06 Q3	F06 Q4
Gauteng				
W Cape	89.6%	89.7%	89.9%	89.8%
KZN				
Mpumalanga	88.3%	88.1%	88.3%	88.2%
Limpopo				
N West				
N Cape				
E Cape	88.2%	88.4%	88.6%	88.9%
F State				

Fiscal Quarter



# Increase in gambling activities

◆ GGR all modes



Financial Year